



Fordhall Organic Farm

Teacher's Pack



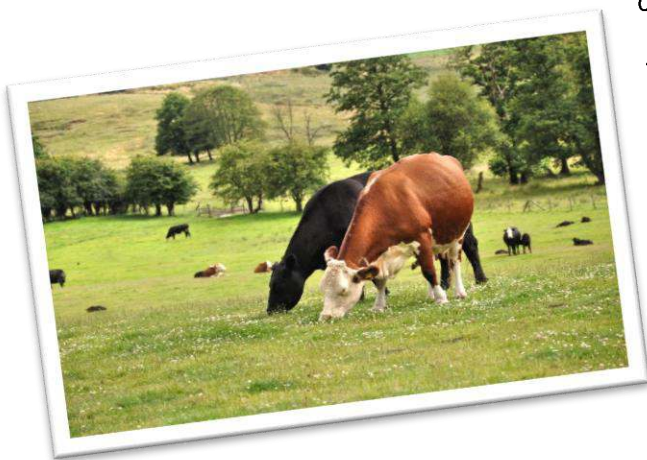
An information pack for
teachers and education group leaders

The Past, the Present and the Future

The Fordhall Community Land Initiative (FCLI) was created in 2005 to save Fordhall Organic Farm from development and to utilise the land as a community resource. It successfully raised £800,000 through the sale of non-profit making shares in a high profile campaign, making it England's first ever community owned farm. As a Community Benefit Society its main purpose was to provide affordable and accessible land to new and young entrants to farming and to increase access and awareness of sustainable food and farming. Owned by its 8,000 strong membership Fordhall Organic Farm is a community asset for all to enjoy.



The pastures at Fordhall have been organic for over 70 years, providing rich and diverse habitats and an abundance of wildlife. Our tenant farmer, Ben Hollins, runs our Foggage farming system. Everything produced at Fordhall is sold direct to the public either through our onsite farm shop, farmers markets, online shop or through our catering trailers at local events.



The FCLI provides free farm trails, educational visits, newsletters, organic café, meeting room space (in our eco-building), events, a youth project working with young people who struggle in the classroom setting, a care farm working with adults with learning disabilities, and numerous opportunities for volunteering.



Our eco-building (above) was constructed using many natural materials that can be seen by visiting groups including hemp insulation, solid hemp walls, recycled newspaper insulation, sheep's wool insulation, welsh slate, lime plasters, clay paints and recycled aggregate paving. We also generate our own electricity using PV Panels and generate our own heat using an air source heat pump.

In 2019, we opened our straw bale bunkhouse providing overnight accommodation for our volunteers and visiting groups (right). This was constructed using straw bales by our volunteers and community groups. Sleeping accommodation includes a boys and girls bunk room and two private rooms for teachers/support workers.

Shares in the farm are still available for individuals or as a group, such as your school.

- it is not too late to be a part of our sustainable future!

What to expect at Fordhall Organic Farm

Fordhall is a thriving working farm run by inspirational young people, where visitors are welcome and there is always something new to see and fun is guaranteed.

The farm has 140 acres of woodlands, wetlands, sandy grasslands, peaty areas, spring fed pools, streams, hedgerows and river.

The sheep and cattle are reared on a Foggage farming system relying on a diversity of over 70 different grass and herb species to keep the pastures productive throughout the seasons, ultimately allowing the livestock, traditional Hereford and Angus breeds to remain outdoors on the pasture for 12 months of the year.

Our Gloucester Old Spot pigs are reared on an extensive free-range, GM Free system in pens close to the farm yard and their antics can be viewed from the enclosed picnic area where you will also find the community garden and hands on activities for children.

Sheep graze in our meadows and during lambing time, in the spring, they can be seen more closely when we bring them into the barns for monitoring.

The community garden is managed by our Care Farm project and supports the production of fruit and vegetables. Our Youth Project actively manages the farm landscape for conservation and visitor satisfaction.



Fordhall Organic Farm Education Group Visits



Fordhall is a wildlife haven. By the river Tern, kingfishers can be spotted sweeping over the water and even otters are occasionally spotted. Dragonflies, damsel flies, coots and swans are often seen whilst our grasses, herbs and wildflowers provide habitats for a variety of insects. Over fifty species of bird have been recorded at Fordhall. Small mammals such as mice and rabbits are abundant, with larger mammals such as foxes feeding on them. Starling murmurations, circling calling buzzards, badger setts,

Trees in the landscape include horse and sweet chestnuts, oak, ash, elder, birch, sycamore, box and blackthorn with willow and alder beside the river Tern and the spring-fed pools. Ancient hawthorn hedges provide shelter for birds, other wildlife and our livestock.



owl roosts and a rookery are all part of Fordhall's rich diversity.

In the south-east corner of the farm, the ruins of a Norman ringwork and bailey castle can be seen. The wooden structure on top of the ringwork is long since gone, but the excellent defensive position is evident. The hill overlooks the surrounding land, enabling intruders to be spotted early and easily fought off. The castle bailey, with its sleeping quarters, stables, cookhouse, workshops and storerooms, would have existed on the flat area around the ringwork and near to the river that curves around the whole hill providing a natural moat at this point.



Hens roam free, visitors stroll through the meadows and we are proud to boast our organic history and future vision.





Welcome to Fordhall

England's first community-owned farm



This farm is unique, it is owned by people living all over the world! In 2006 they helped Ben and Charlotte Hollins save Fordhall Farm by buying thousands of shares. This made Fordhall the first community-owned farm in England. Fordhall Farm now promotes sustainable farming methods whilst using the land for community benefit.


Organic farming pioneers

Fordhall has been managed using organic farming methods since the 1940's, using a pioneering foggage system developed by Charlotte and Ben's father, Arthur Hollins. Fordhall continues to be farmed using organic methods and with traditional breeds.

We hope that you enjoy your walk around the beautiful pastures of Fordhall. Everything you see plays its part in the farming system and every inch of the farm has its own story to tell – enjoy exploring!

1 farmer, 8000 landlords

Food and Farming Programme

Target Group/ Curriculum links	Activity Title	Content and Focus
<u>KS1, KS2, KS3 and KS4</u> Science, Geography PSHE. Business Studies	Farm to Fork Tour	Guided farm tour. A practical hands-on half day including; Fordhall's history, the FCLI, organic principles, tasting and debating, cows, lambs, pigs, worms, grasses activities; relevant to all age groups.
<u>KS1, KS2 & KS3</u> Science, English Geography, PSHE, Maths, Technology	Eco Cooking, Organic Farming and Sustainable Living Farm Shop	Looking at where our food comes from and how it ends up on our plates. Nutritional information as well as cooking, tasting and debating. The Food Miles Shopping Basket Challenge.
<u>KS1, KS2 and KS3</u> PSHE, Physical Education, Design and Technology, Geography.	Trails and Navigation (Orienteering)	Learners will learn to recognise landscape features through practical activities and will be introduced to orienteering. Groups can set and follow their own trails as well as following simple check point trails. An introduction to following an orienteering course using compasses is available for more experienced students.
<u>KS1 and KS2</u> Science 	Habitat Hunt	Fordhall Habitat Map. Stream, Woodland or Meadow Mini-beast Hunt. Rivers/Ponds. Tree and Wildflower Bingo. Optional flora ID games. This activity would work well in conjunction with the guided farm tour.
<u>KS1, KS2, KS3 & KS4</u> Design and Technology, PSHE, STEM	Wild Woodlands including Shelter Building	Woodland Shelter Building and a Campfire. This is a comprehensive woodland based session with seasonal, practical experiences. Tool skills and whittling available for groups no larger than 10 from KS2 and above. This activity would work well in conjunction with Trails and Navigation or a guided farm tour.



All our sessions are practical and hands-on. Sessions can be adapted to suit the requirements of the group and the needs of the school. We believe that learning should be fun.

Each guided visit lasts for up to 2 hours. We encourage groups to choose **two** programmes and stay for the day using our picnic area or shelter for a picnic. We are able to subsidise some farming and agriculture based visits and we do this on a first come first served basis. Please enquire.

ooking a Visit

Fordhall Community Land Initiative owns Fordhall Farm in
Market Drayton, Shropshire.

Fordhall is a working organic farm modelling sustainability, community
and healthy living – connecting people with the countryside!

At Fordhall we lead group visits offering a wide range of curriculum linked
learning opportunities to suit Foundation Stage through to KS4 and adult groups.

Please see our extensive choice of programmes including:
organic farming, gardening, outdoor cooking, orienteering,
forest school, community land initiative studies
and outreach Fordhall.

Staffing

Experienced FCLI education staff will host your visit. Teachers and Group Leaders must remain with your group at all times and are responsible for the group's behaviour. We recommend a ratio of one adult to six children for Nursery and KS1 and a minimum of one adult to ten children for older pupils.

Equal opportunities

We are able to cater for groups with special needs, please ask for further details on booking.

Health and Safety

We have trained first aiders on site. The Farm and all of our activities are risk assessed and these are available once a booking has been made.

Charges

Two-hour session/visit: **£ 120.00**

Maximum group size of one standard class.

Travel – Please view this link for a list of organisations which - depending on schools meeting their criteria - could cover or subsidise your school's travel costs. www.countrytrust.org.uk/news/post/funding-for-schools

Please pay on the day. Cheques payable to 'Fordhall Community Land Initiative'

Limited numbers of free of charge DEFRA subsidised, farming themed, group visits are available on a first come first served basis (subject to a feedback form being completed on the day of visit) – please enquire when booking. Charges for Forest School, CPD, Outreach and Birthday Parties are available on request.

If cancelling a pre-booked visit please give one weeks' notice. Failure to comply will result in payment in full.

We recommend a visit to the farm before you visit with your group.

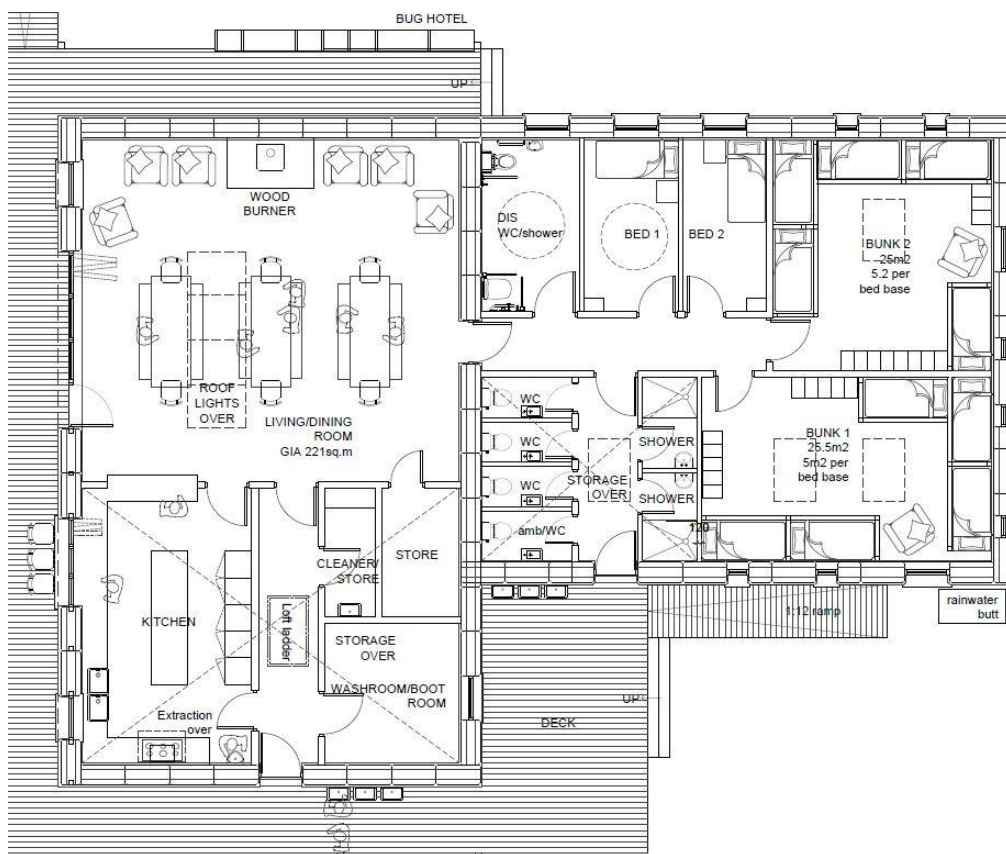
At the end of your visit please take home all picnic waste.

OVERNIGHT VISITS 2022

Residential visits are available.

If you are interested in this option, please contact:

Mike.grabarz@fordhallfarm.com



Fordhall Community Land Initiative
Education Group Visit Enquiry Form



Name of School/Organisation.....

Contact Person/Teacher in Charge.....

Email Address.....

Contact Tel No.....

Address

.....

..... Post Code.....

Number in Group Age range of Group

Number of Teachers/leaders.....

Date options for visit 1..... 2..... 3.....

Time of arrival..... departure.....

Activities required.....

.....

.....

Please give details of any special needs.....

.....

Please give details of any medical needs.....

.....

How did you hear about us:

Permission for Photographs for publication and promotional use: Yes / No

Please return the form by post or email to get your personalised quote and itinerary, or simply give us a call.

Fordhall Community Land Initiative Ltd, Fordhall Farm, Market Drayton, Shropshire TF9 3PS.

Tel: 01630 638696

E-mail: discover@fordhallfarm.com

Web site : www.fordhallfarm.com

Registered in England and Wales as an Industrial and Provident Society. Reg No. 30030R