

Why do we need it?

Our existing porta cabins are simply inadequate for our volunteers, our adults with learning disabilities who attend our care farm, and the young people on our youth project. The porta cabins are draughty, cold and simply too small for the growing needs of our community. Moreover, our educational visits are growing each year. We welcome schools from Market Drayton, surrounding villages and as far away as Wolverhampton. We offer memorable experiences that educate and inform the next generation and we want to do more.



Accommodation for up to 30 guests will facilitate overnight stays from schools and youth groups. They can experience a bat walk, gaze at the stars, listen to the owls and watch the morning sunrise – special experiences that everyone should have the opportunity to enjoy.



We want to expand our volunteering opportunities for young people, students and adults to experience life on our organic farm.



Will provide accommodation for weddings that we host during the summer months

The kitchen will provide a workspace for our care farm to make jams and chutneys.

The whole building can be used as a base for meditation or yoga retreats

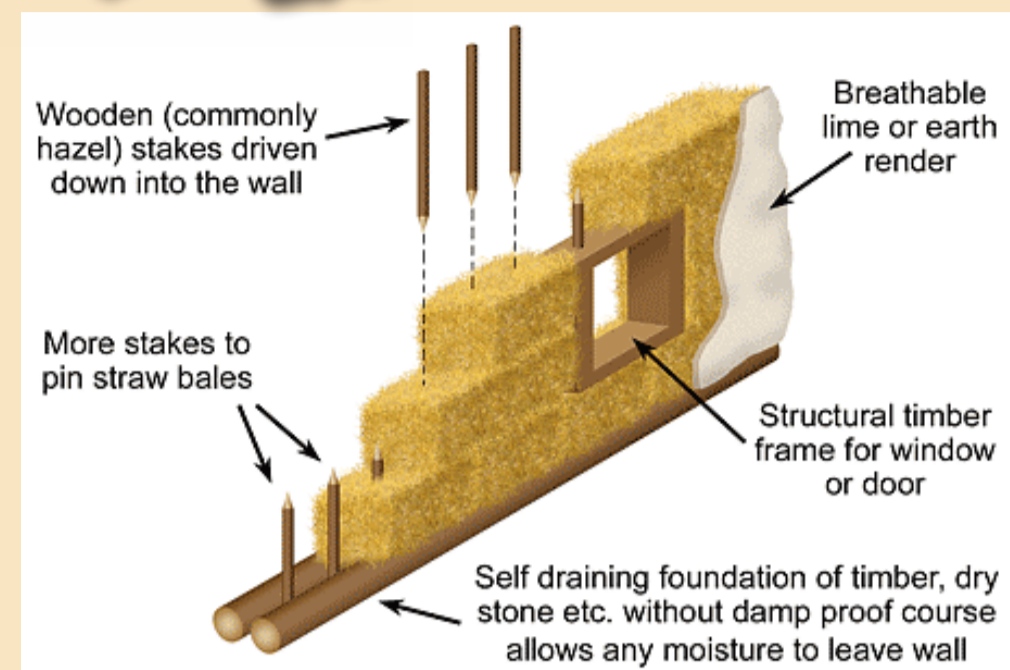
Most importantly, the new straw bale bunkhouse will contain the facilities needed to enable thousands more children – the next generation upon whom the future depends – to learn about Arthur Hollins' sustainable vision. This building will honour his legacy, both in its ecological construction but also in what it represents. A place that is built by the community for the community.



PV panels – will be placed on the roof to make the most of the south facing plane and to limit the energy we will need to buy from the grid.

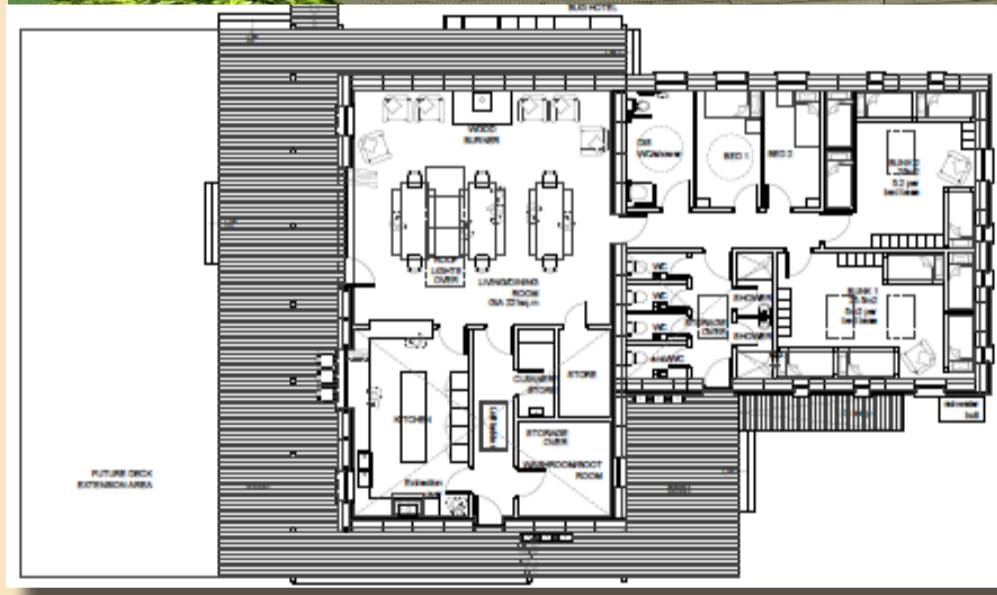
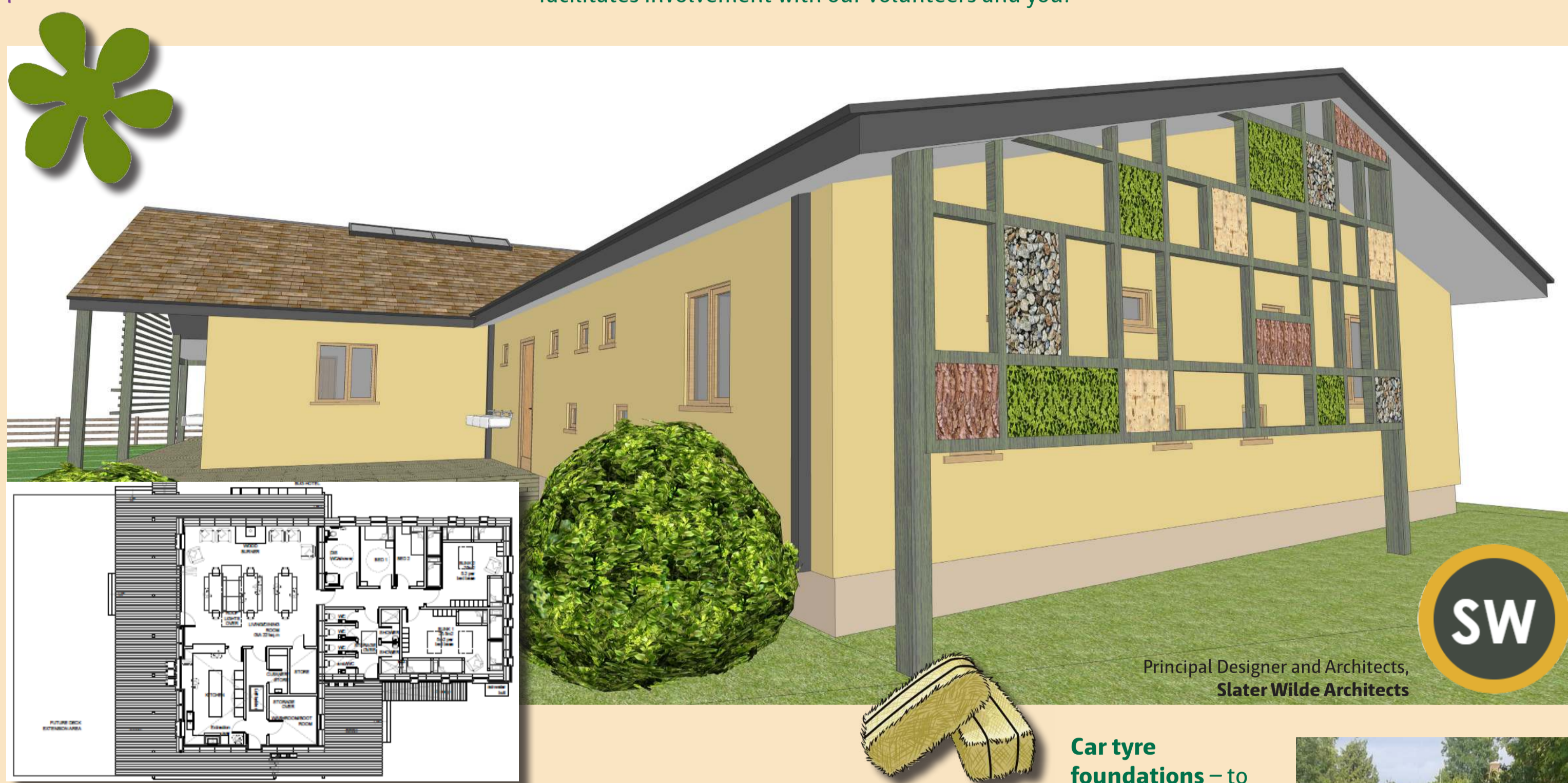
Cedar shingles – in fact 20,000 of them will cover the roof. A wonderfully natural, yet resilient and long-lasting material to allow our building to merge with the natural landscape. Cedar is equipped with natural properties that make it resistant to moisture and damage from moss growth, damage from insects, and damage from harmful UV rays. It can even withstand the heavy snowfall of the Scandinavian countries where it has been used for centuries as standard building practice. It is even a natural insulator – WOW!

The Fordhall Organic Farm Straw Bale Bunkhouse



Straw – constructed by the aptly named Huff and Puff Construction, we will create both load bearing and non-load bearing walls with our straw bales. Using both methods will demonstrate how versatile straw bale construction can be. This carbon absorbing material will provide both insulation (and cooling in the summer) and structure for the building without the use of energy intense concrete. It also facilitates involvement with our volunteers and you!

COMING SOON



Timber frame – constructed in the living room section of the building, this round wood timber frame will use larch and Douglas fir harvested in Wales. It will be constructed by a workers' co-operative called Ty Pren based on the estate where the timber will be felled. They will use only hand tools, even lifting the timber from the woods by hand. All joints will be traditionally handcrafted, and pegged together using handmade oak pegs. When it arrives on site, it will be erected with ropes and pulleys – no cranes in sight.



The natural materials we will use

Car tyre foundations – to support the building and to lift the straw walls above ground. Using car tyres will re-use a nasty waste product that does not degrade and is not easily recycled. These tyres will be filled with hard core and placed in regular locations to support the weight of the building, removing the need for vast concrete foundations and therefore avoiding the harmful greenhouse gases that would have been emitted as a result.



Clay and lime plasters – will coat the straw offering protection from the elements, safeguarding it from damp, providing a fireproof lining and offering a completely breathable and natural wall structure. The clay plaster will cover the inside of the walls and will all be applied by hand. It is important that there is good contact between the clay and the straw which means working it into the bale a layer at a time.



Sheep's wool insulation – will be used in the roof and the floor spaces to ensure energy is conserved at every corner of the building. This natural material can be handled without masks and gloves, and will be sourced from within the UK.



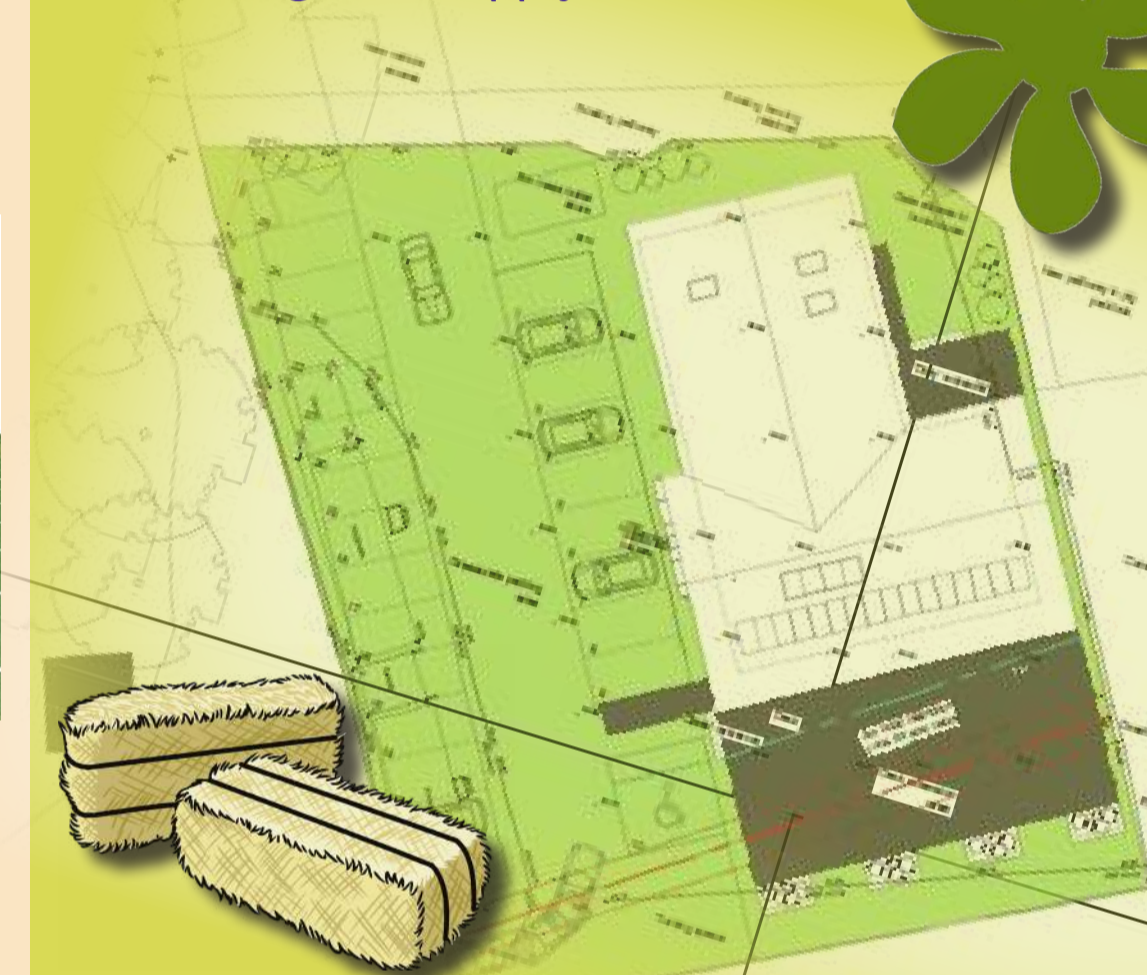
All of these wonderful materials and more will be brought together by our Principal Contractor - Traditional Building Skills. Based in Herefordshire, they are used to working with people of all ages and abilities as well as providing training opportunities. They are highly skilled in working on listed buildings, using natural materials and traditional techniques.



You can get your hands dirty too!

There will be plenty of opportunities over the summer for you to get hands-on with the build. We will be offering five-day straw bale courses and one-day clay render days. Dates are variable but we anticipate the straw experiences being available throughout August and the render experience days starting from late August and throughout September.

If you are interested in attending either of these courses, please register your interest through our office (01630 638 696) or website www.fordhallfarm.com - in most cases charges will apply.



We need more funds

We have raised £400,000 towards the construction of this building but we need to raise more. Please help us raise the final bit. Donations can be taken in Arthur's Farm Kitchen or through our website. Please help more people access Fordhall Farm, help them to experience nature and organic farming and help us to grow our impact in the community.

With sincere thanks to our current funders:



Jean Jackson Charitable Trust

